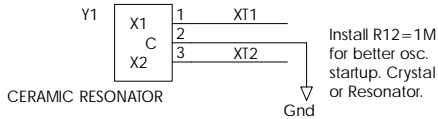


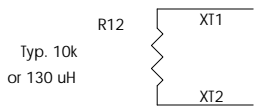
Resonator w/o caps:  
install resonator (Y1), C2, C3

Resonator with caps:  
install resonator only (Y1)

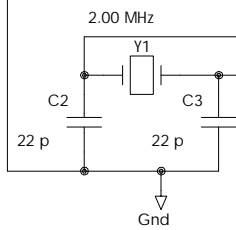


RC Oscillator:  
install R12, C2 only

LC Oscillator:  
install L at R12, C2

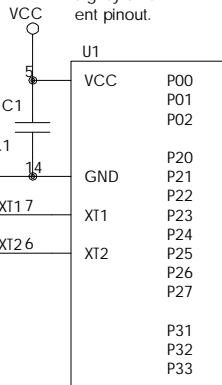


Crystal Osc. Shown



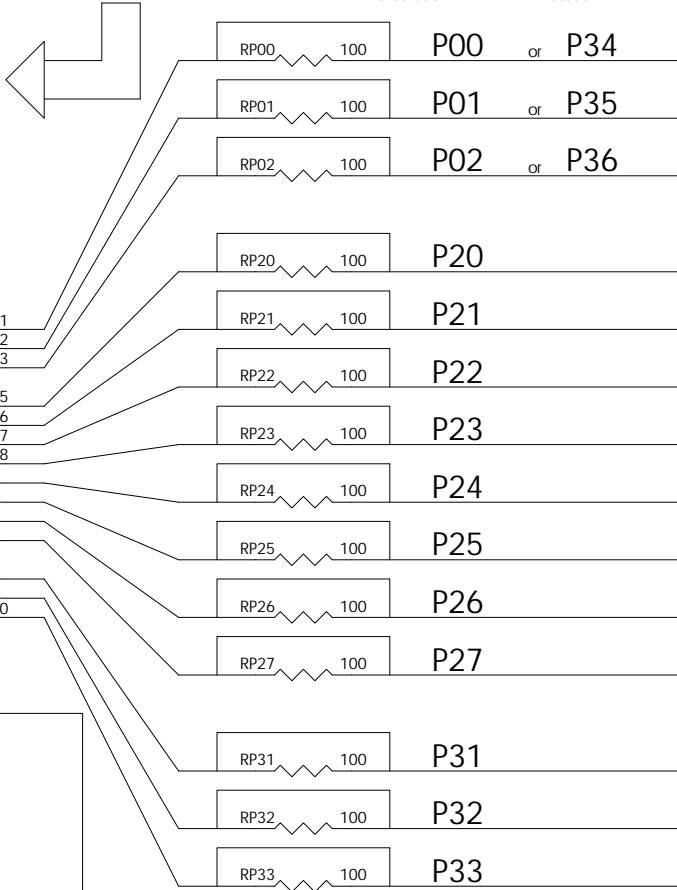
**Note:**

E03/06 has slightly different pinout.

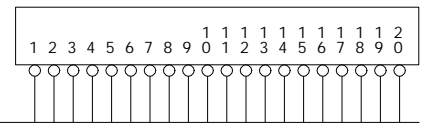


Device Shown:  
Z86E02/04/08/05/07

**Oscillator Options**



Vcc



**Patch Area**

Supported 18 Pin DIP Devices

- Z86C02
- Z86E02
- Z86E02 SL1903
- Z86E02 SL1925
- Z86L02
  
- Z86C03
- Z86E03
- Z86C06
- Z86E06
  
- Z86C04
- Z86E04
- Z86E04 SL1866
- Z86E04 SL1903
- Z86L04
  
- Z86C05
  
- Z86C07
- Z86E07
  
- Z86C08
- Z86E08
- Z86E08 SL1866
- Z86E08 SL1903
- Z86L08

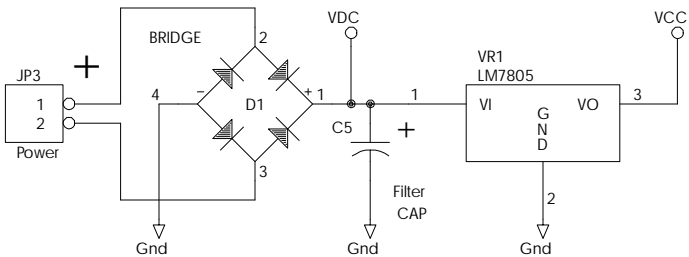
**Power Supply Options**

For DC Input 8-12v  
do not install D1  
Jump 1-2 and 3-4 (D1)  
C5 is optional  
Apply Power at JP3  
OBSERVE JP3 POLARITY

For AC Input 8 - 15v  
Install D1  
Size C5 accordingly  
(47 - 470 uF)  
Apply Power at JP3  
OBSERVE C5 POLARITY

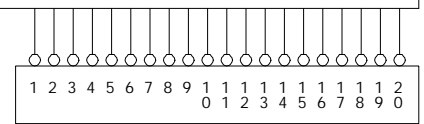
For DC Input 3.5-6v  
See above  
Remove VR1 and Jump 1-3

Note:  
OK to leave Bridge installed for DC



\*RP\* resistors are shorted in copper by default. Cut jumper as required at Soldermask relief.

Gnd



NovaTech Industries, Inc.

Design by Joe Rovito  
(215) 799 0123

Size	Document Number	REV
A	ZPCB-18.sch	-
Date:	March 8, 1998	Sheet 1 of 1